





Coastal Mountain Excavations is a Whistler-based heavy construction and snow removal company with a wide range of expert services and a commitment to customer satisfaction.



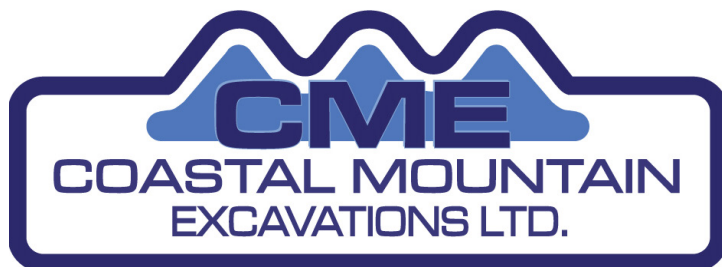
---

Coastal Mountain Excavations is a Whistler-based heavy construction and snow removal company with a wide range of expert services and a commitment to customer satisfaction. Since commencing in 1975, the company has evolved into the region's number one service pro-

vider, while still remaining locally owned and operated. They have grown their team to include roughly 80 qualified and experienced professionals, they have expanded their fleet to include a diverse and extensive range of top-of-the-line machines and vehicles, and they have firmly established a reputation for reliability and premium-quality service.

---

MAKING  
IT  
EASY





---

“We strive to be the number one heavy construction and snow removal company within the Sea-to-Sky Corridor for the long term,” says Matt Woods, President of the company.

“We are committed to top quality customer service at all levels and to providing our employees with a safe and healthy work environment,” he continues. “Our experience, professionalism and honesty are second to none.”

Matt’s father, Nigel Woods, was the founder of Coastal Mountain Excavations. Nigel originally started the business as a “one man band” operating out of an old log cabin in the early days of Whistler. Over 40 years later, Coastal Mountain Excavations works out of a brand new purpose-built facility in the newly-created industrial precinct of Nesters Crossing. They count some of the province’s top developers as their clients, and have been involved in some of the region’s premier subdivisions.

---





EPG



Engineered Pipe Group

**Creating and supporting partnerships across Canada**

HDPE Pipe, Fittings, Fabrications  
and Fusion Services

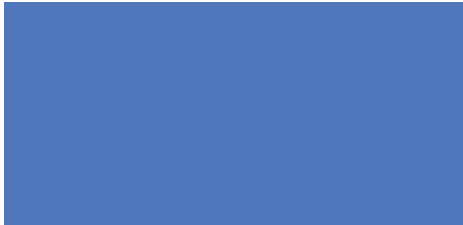
**Engineered Pipe Group**  
**5958 205A St Langley BC**  
**V3A 8C4**

T: 604 539 0108 F: 604 539 0884

Visit us at [www.hdpe.ca](http://www.hdpe.ca)







Today, in addition to snow removal and land development for roads and structures, they also offer a range of services including: drilling, blasting and rock splitting, site preparation and utility services, project design and execution, landscaping, aggregate supply, street sweeping, asphalt crack sealing, and more.

This depth of capa-





“We’re a one-stop-shop service provider, and that’s where we really shine,” Matt says. “We can do all the drilling and blasting, we can do all the aggregate production on-site, and we can do it all to the highest industry specifications. We even do street sweeping, and we’re a certified EPRO waterproof membrane installer as well.”

“We do it all under one umbrella,” he continues. “We don’t rely on subcontractors. We create a lot of efficiencies and a lot of value on every project we undertake.”

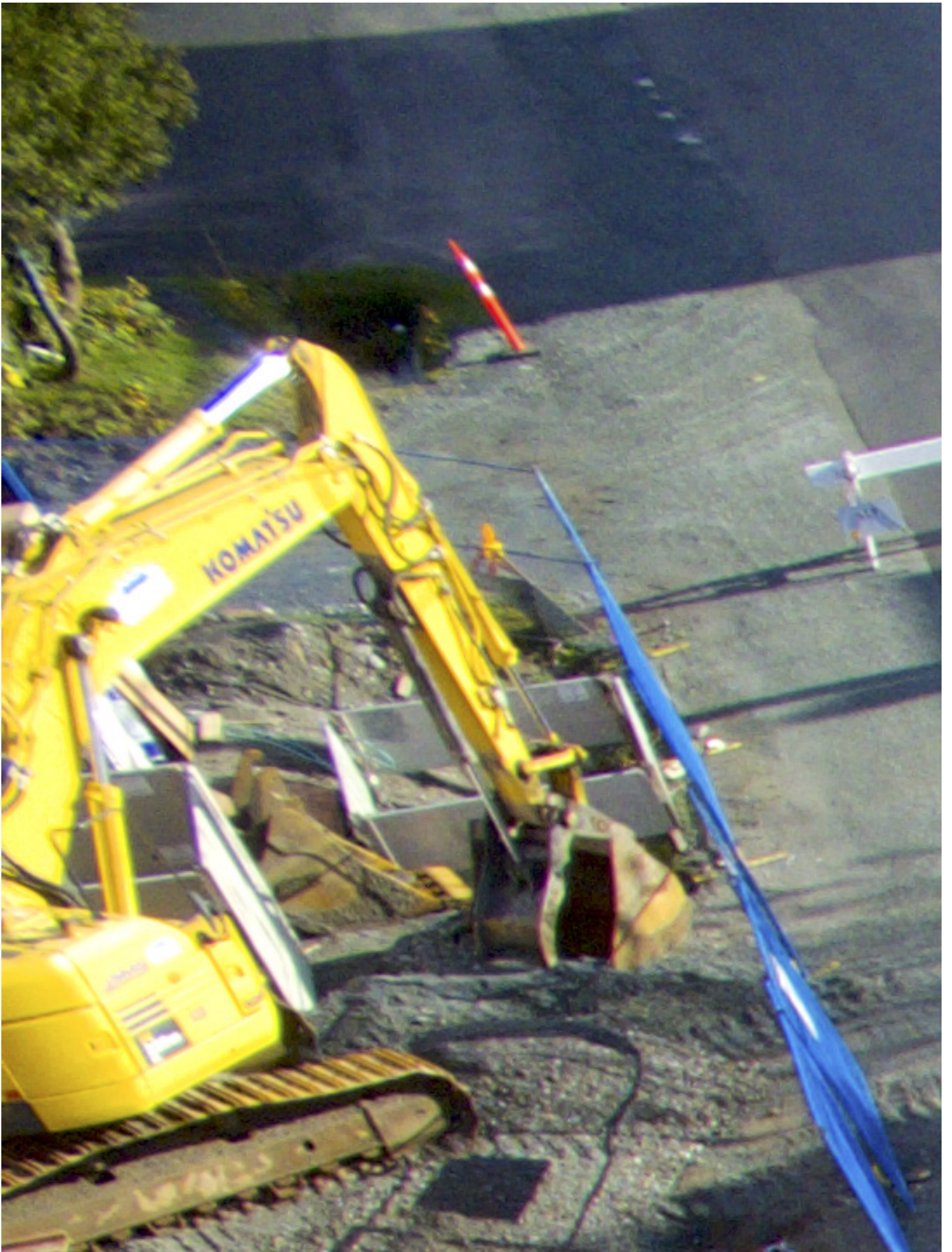
Coastal Mountain Excavations is also set apart by their high calibre of customer service. At Coastal Mountain Excavations, they make it their top priority to work with customers and clients to make sure all their needs and specifications are met. Their team also works hard to stay on budget and on time on every job.

The company’s success with these goals has been recognised with a long



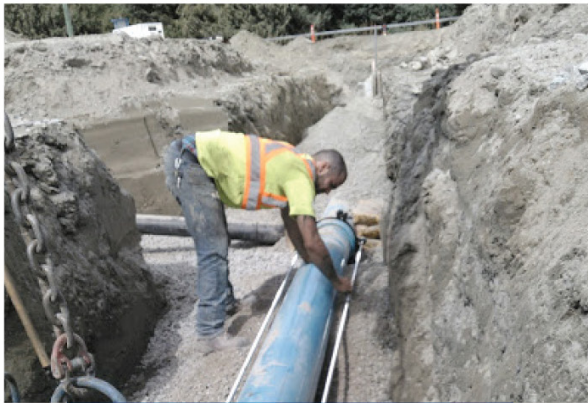
“We’re a one-stop-shop service provider, and that’s where we really shine.”







list of client testimonials, estimates that Coastal Mountain as well as repeat business. tain has saved Kindred For example, they enjoy a roughly \$100,000 in costs relationship with acclaimed by doing all the backfill local builder Kindred Construction processing on-site. construction that spans 35 Coastal Mountain Ex- years and has two genera- cavations has also formed tions of ownership. They lasting relationships with are currently working to- their team – people whose gether on a 10,000 square talent and friendly service foot home, where Matt es- are paramount to making



Emco Waterworks is the largest waterworks distributor in Canada with over 49 locations. We carry an extensive variety of pipe, valves and fitting product lines for specialized Waterworks management projects.



WHEN THE TRENCH IS DUG AND THE MACHINES ARE READY TO GO, COUNT ON EMCO WATERWORKS TO DELIVER.

[emcowaterworks.com](http://emcowaterworks.com)

20003 100A Avenue, Langley, BC V1M 3G4  
t: 604 888 5533



the company successful. our junior accountants, to  
Many staff members have our senior mechanics and  
been with the business for our project managers, all the  
over 15 years, some have way up to me and my part-  
celebrated 30 years of ser- ner, Operations Manager  
vice, and several are even Tim Coulson.”

approaching their 40th “We offer a profes-  
year with the company. sional and friendly work

“We’re a big fam- environment,” he says.  
ily here,” Matt says. “That “We’re big believers in pro-  
cesses true for everyone from moting from within. And





once people join us, they tend to not want to leave.”

Coastal Mountain Excavations typically provides construction and development services for eight months out of the year, when it’s not snowing. When winter hits, however, the company turns into the Sea-to-Sky Corridor’s biggest snow and ice management service provider. During those colder months, they operate approximately 35 pieces of snow removal equipment every day. They have become known for employing the best available snow removal technologies, as well as the most environmentally sustainable ones – for example, they use Canadian-designed Trecan snowmelters, which are known

for their thermal efficiency.

The company’s dual focus on construction and snow removal allows them to retain their core staff for 12 months a year. This is unlike many of their local competitors, who have to re-hire and re-train employees every spring.

“All of our people are well trained and experienced, and our clients are used to dealing with them year in and year out,” Matt explains. “This is how we have developed trust, and how we have earned our reputation for reliability.”

An important factor behind the loyalty of Coastal Mountain’s employees – as well as the loyalty of their clients – is the company’s dedication to health and safety.

“We are committed to providing our employees and clients with the safest possible construction sites,” Matt says. “Our safety record over the last 35 years has been impeccable. With ongoing training and constant monitoring of safe practices, we are committed to providing a safe working environment.”

“Nothing is more important to us than the wellbeing of all stakeholders in our projects and services,” he adds.

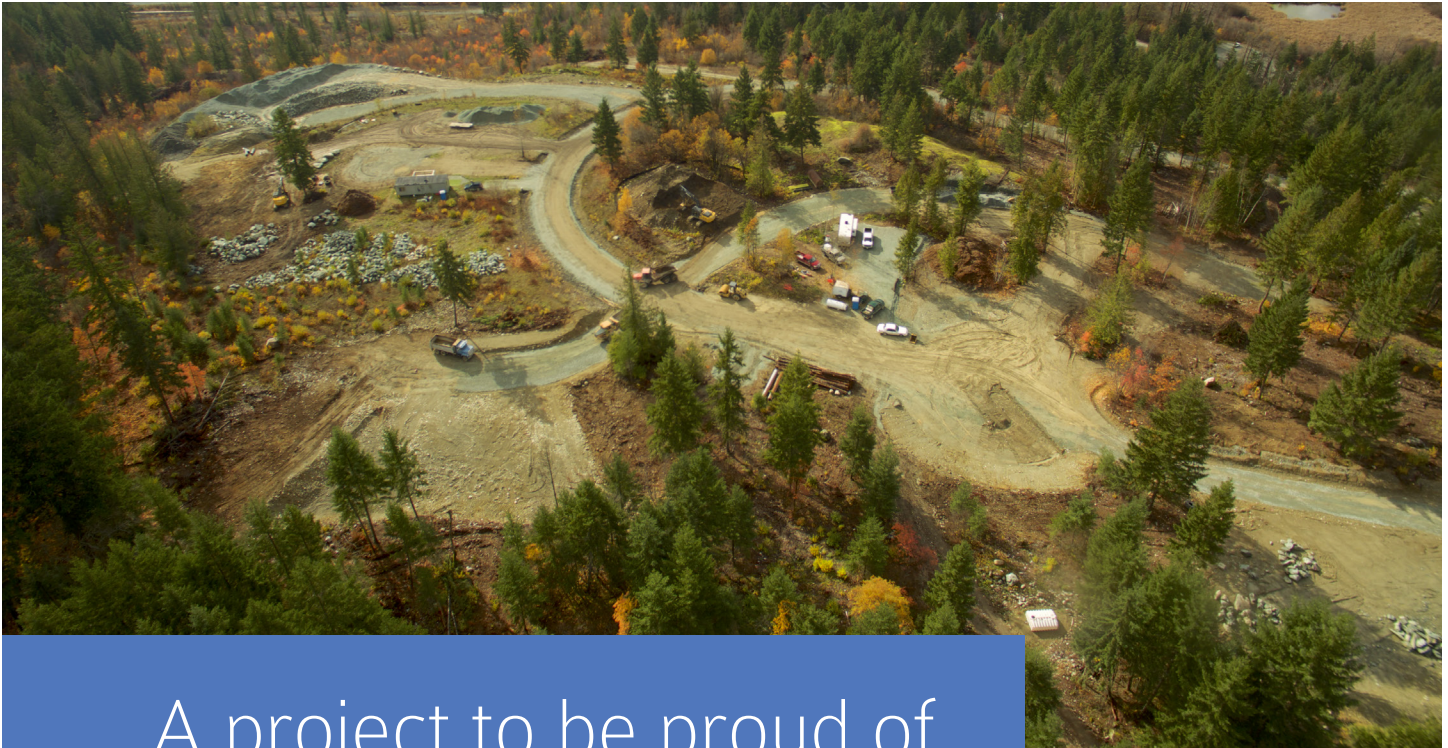






“We do it  
all under  
one  
umbrella.”





A project to be proud of

As an example of the calibre of work Coastal Mountain Excavations is capable of on the construction side, Matt cites their contribution to the recently constructed Valley Trail connection between the neighborhood of Cypress Place and the newly-created Nesters Crossing in Whistler.





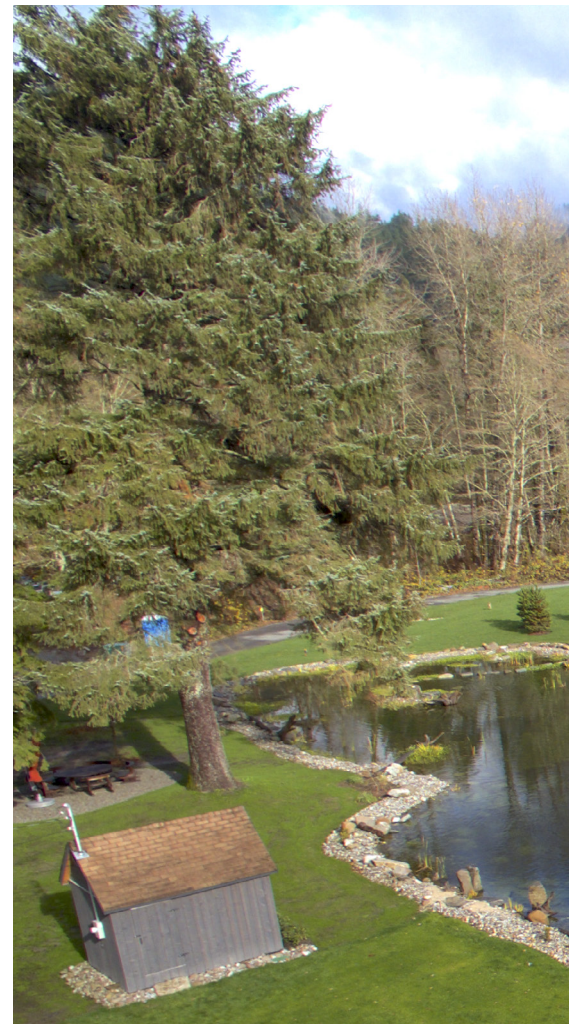


“All of our people are well trained and experienced, and our clients are used to dealing with them year in and year out.”



That connection was originally conceived as an overpass that would go above the local CN Rail line, but building one high enough to satisfy CN Rail requirements ultimately proved too costly. Instead, the developers on the project decided to engineer an underpass, the costs of which were shared between the developer and the municipality.

Coastal Mountain Excavations completed that underpass roughly a year ago. The delivery involved what Matt calls a “pretty exciting 24-hour time period,” during which time the company cut and removed the





existing rail tracks, moved roughly 6,000 cubic metres of dirt, installed a box culvert, backfilled the site,

and put the railway back on top.

“It was pretty intense, but it was the best day of work I ever had,” Matt says. “It was such a cool project.

A lot of engineering and

planning went into it, it was a huge coordinated effort, and we pulled it off without a hitch.”

“We knocked it out of the park,” he adds. “We

knocked it out of the park. I actually rode my bike through the underpass on

my way to work this morning, and I’m very proud of







the result.”

The civil engineering on the underpass project was done by the Vancouver-based CREUS Engineering, who Coastal Mountain Excavations have worked with many times before. The geotechnical engineering, meanwhile, was by EXP Services, and the structural engineering by United Building Systems. The box culvert was supplied by Langley Concrete Group. CN Rail was also an important



stakeholder on the project, as they had to coordinate the rail shutdown in order to create the 24 hour window where the company delivered majority of the project.

According to Matt, Coastal Mountain Excavations was able to pull that project off, despite the tight time-frame, due to the experience and co-ordination of their team.

“Everyone had their work plan dialled in,” he says. “We communicated to every player that was involved – from the guys on shovels, to the guys running the big excavators and the rock trucks, to the crane guys who brought the culvert in, to everyone else. The project probably involved 100 different people in a 24 hour period, and everyone did their job. It was an amazing installation that went very well.”





“We’ll keep adding business units that enhance our offering and separate us from our competition.”

Moving forward, the company is looking forward to accomplishing even more challenging feats, as they continue to pursue large and complex projects like that underpass. The company is also looking forward to continually improving, and otherwise doing what it takes

to maintain their status as the number one civil construction and snow and ice management service provider in the Sea-to-Sky Corridor.

At the same time, Matt says the company also aims to grow through the addition of new business units. For example,

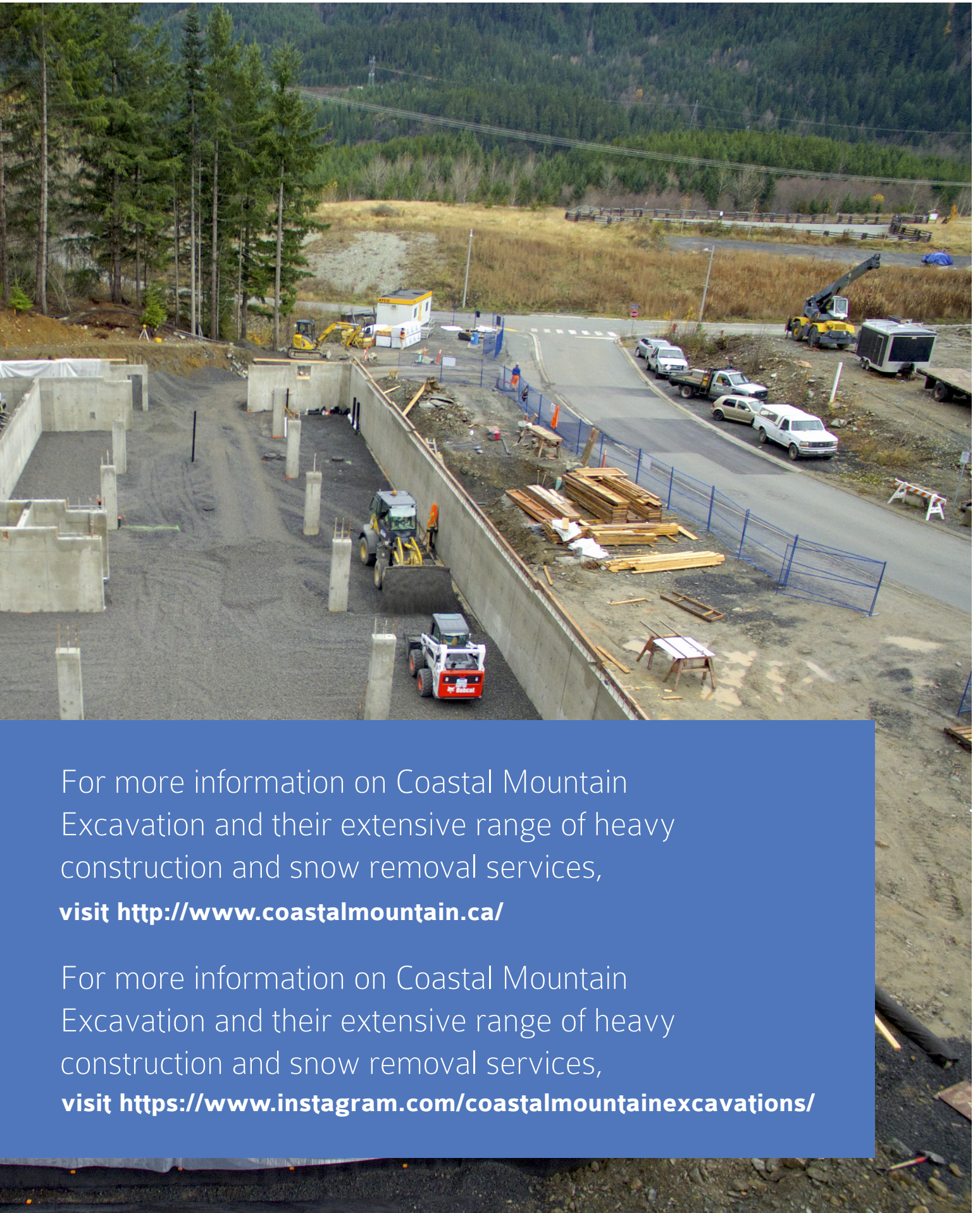
they are in the process of launching a maintenance and repair workshop from their new premises in Nesters Crossing. There, they will provide a legal truck inspection service, as well as a service repairing other company’s trucks and equipment in addition to their own.

“We’ll keep adding business units that enhance our offering and separate us from our competition,” Matt concludes.

“We want to keep making it easier for our clients to do business with us. We want to make choosing us a no-brainer.”







For more information on Coastal Mountain Excavation and their extensive range of heavy construction and snow removal services,

**visit <http://www.coastalmountain.ca/>**

For more information on Coastal Mountain Excavation and their extensive range of heavy construction and snow removal services,

**visit <https://www.instagram.com/coastalmountainexcavations/>**



